

MAPPING HUMAN DEVELOPMENT IN BRAZIL: ONLINE DATA VISUALISATION FOR POLICY MAKING

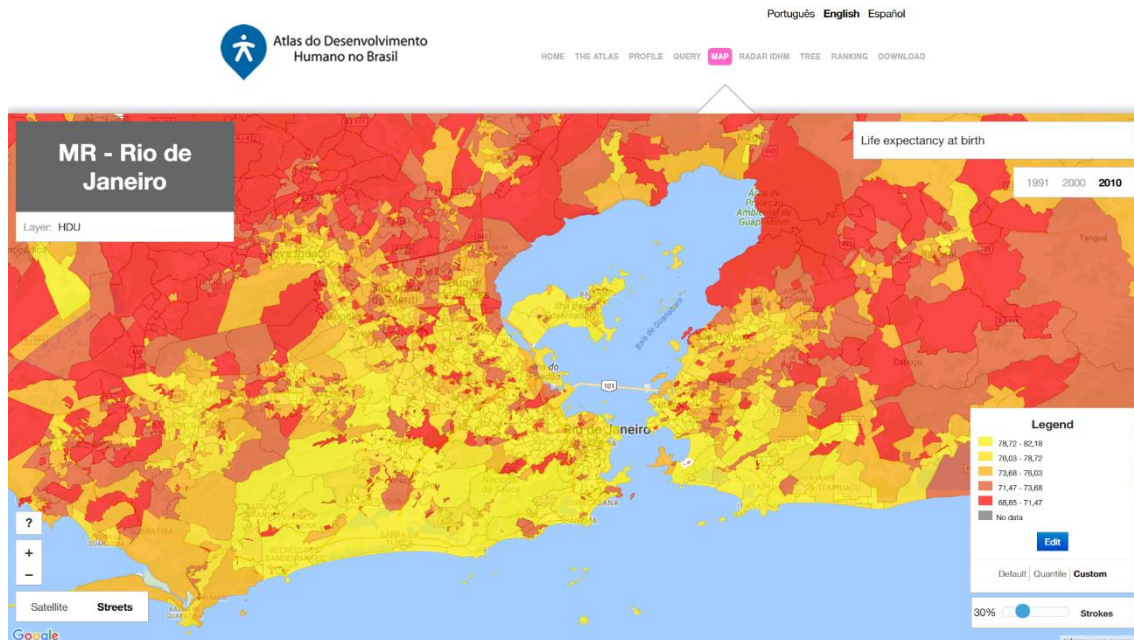


Figure 1 The 'Atlas Brasil' website has a user-friendly interface that generates interactive maps with more than 180 socioeconomic indicators, providing a quick glimpse of the human development framework within a city. Source: www.atlasbrasil.org.br

If 'a picture is worth a thousand words', a map might condense a whole reality. Above, the representation of life expectancy in Rio de Janeiro, Brazil. The indicator varies between 68 and 82 years, depending on the neighbourhood – a gap of 14 years within the same city. Knowing precisely where the inequality resides is key for any initiative aiming at changing this reality. And that is how the online 'Atlas of Human Development' is helping the country.

The United Nations Development Programme (UNDP), in partnership with local research institutions in Brazil, developed the user-friendly online platform. The tool maps over 180 socioeconomic indicators in education, health, income, labour, housing and vulnerability, besides the sub-national adaptation of the Human Development Index (HDI).

The initiative has attracted attention from governments to the civil society, including non-government organisations, the private sector and the media. In 2014, it was awarded for its innovative use of technology in public management, contributing to political processes, transparency and accountability.

The amiability of the website provides open access to information to citizens and policy makers alike, translating complex indicators to interactive maps that are an accurate snapshot of human development – a project that could be replicated in other countries in the Global South.